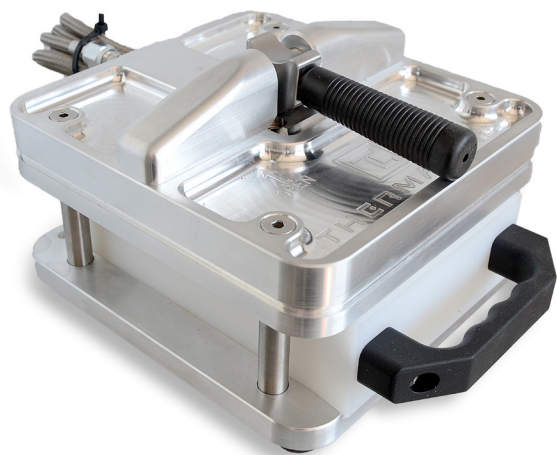


DI600 Dry Ice Machine



Thermalyne's NEW DI600 Dry Ice Machine is the latest design in benchtop dry ice making. Utilizing a patented heat exchange technology provides up to 30% better yield from a standard 50 lb. CO2 cylinder (with siphon).

No need to dismantle machine to retrieve dry ice block, Simple 1 Lever Operation!

Save time and expense of receiving a dry ice delivery, make a 1 lb. block in ~1 minute with a fresh CO2 bottle.

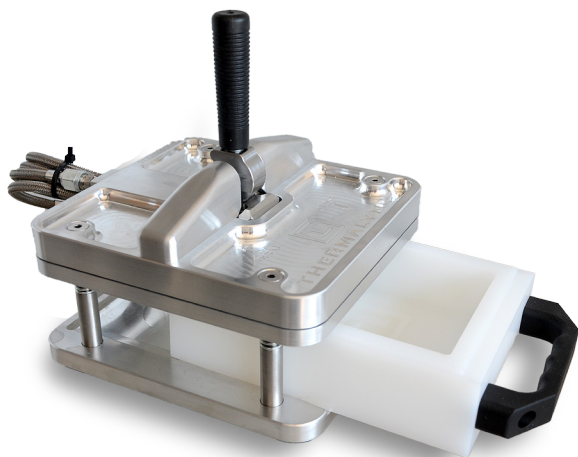
DI600 will dispense 9 to 12 1 lb. blocks from a standard 50 lb. cylinder

Dry ice is the Ideal cooling agent for packed medical goods such as pharmaceuticals, diagnostic specimens and biological substances.

Dry ice is colder than typical ice water and will not leave a residue.

DI600 is machined from solid aluminum, will not rust or have chipped paint and the ice tray is manufactured from indestructible Delrin.

Four non-skid rubber feet to prevent scratching or sliding on work area.



Model Number

Description

DI600 Dry Ice Machine w/ 4ft (1.2m) nickel-plated copper connecting tube with standard CGA 320 thread coupling

Specifications

Dimensions LxWxH

Weight

Yield

Dry Ice Block: 6" x 4" x 1.5" (15.24 X 10.16 X 3.81 cm) 1.0 lb. (0.45 kg) ±10% 9 to 12 1 lb. blocks - from 1 50 lb. CO2 cylinder

Dry Ice Machine: 10" x 7" x 5.5" (15.24 X 10.16 X 3.81 cm) 9.6 lbs. (4.36 kg)